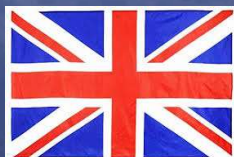




HISTORIC



CONFIRMATION OF START



ENGLISH
VERSION



24-27 FEBRUARI 2022
RALLYSWEDEN.COM
#RALLYSWEDEN



CLOSER TO RALLY.

RALLY SWEDEN ENVIRONMENTAL POLICY

As one of Sweden's largest spectator event Rally Sweden shall be a leader and good example in environmental work both nationally and internationally. We will profile Rally Sweden as an organizer that puts the environment in all areas all year round, even if the rally takes place in the winter. We want the entire organization to be engaged in environmental work and that each employee and marshal takes environmental considerations into the decisions taken. Successively Rally Sweden through conscious choice will work for the environmental impact to be reduced and we will:

- **Commit to continuously improve our environmental work.**
- **Define clear goals and frameworks for our environmental work.**
- **Educate and inform as many people as possible both within the organisation and externally of our environmental policy.**
- **Comply with relevant environmental laws and regulations, and other environmental requirements as well as the FIA Institute Environmental Certification Framework.**
- **Strengthen our focus on specific aspects of our environmental work regularly through structured and planned work within:**
 - o **Seeking cooperation and knowledge exchange with environmental operators to ensure high level quality of our environmental work.**
 - o **Observing environmental work and environmental impact when we choose partners and suppliers and strive to choose products and services with proven good environmental performance.**
 - o **Seeking to limit our transports' environmental impact as much as possible.**
 - o **Saving energy and use renewable energy sources where possible, minimize waste, recycle and energy recycle.**

FIA Environment accreditation

Rally Sweden has become the one of the first motor sport event in the world to achieve the accreditation

"Achievement of Excellence" from the FIA Institute's environment programme. The framework forms part of a broader initiative between the FIA and the FIA Institute aimed at evaluating and reducing the environmental impact of motor sport.

One important factor is the number of print-outs made from various documents. Information documents like this will only be published on the event website and a bare minimum of supplementary regulations will be printed for the key officials and competitors.



CLOSER TO RALLY.

Innehåll

RALLY SWEDEN MILJÖPOLICY	2
WELCOME	4
CONTACT	5
SCHEDULE	6-7
ADMINISTRATIVE CHECKS	7
RECONNAISSANCE	8
SERVICE PARK	8-9
TRACKING	9
SCRUTINEERING	9-10
DURING RALLY	10
PRIZES, POINTS, TIE, PRIZE GIVING	10
TWO-WAY-RADIO	10
IMPORT OF VEHICLES AND SPARE PARTS	11
IMPORTANT - REGULATIONS IN SWEDEN and NORWAY	11
HOTEL AND ACCOMMODATION RESERVATION	11
COMPETITORS RELATIONS OFFICER	12
HOSPITALITY	12
MEDIA	12-13
MEDICAL AND SAFETY SERVICE	13-14
LIST OF USEFUL SERVICES	15
DOCUMENTS AND DRAWINGS	16-29



CLOSER TO RALLY.

WELCOME AND INTRODUCTION

Welcome to Rally Sweden Historic!

For the seventh time we will organise an event with historical cars in conjunction to the WRC event Rally Sweden. The Rally Sweden Historic will take place 24-16 February 2022 for the first time in the regions of Västerbotten.

Locations and Route

The Rally HQ is in Nolia in Umeå.

There will be two opportunities to collect rally material at Rally HQ in Umeå, Wednesday and Thursday morning. The recce of stages is on Thursday this year. Scrutineering will be located in Opus Bilprovning Västslätt, Umeå.

The length of the route is about 485,28 km with 7 special stages covering approximately 121,13 km. The rally will run in Sweden.

The start of the rally will take place on Friday morning the 25th of February and finish Saturday the 26th of February in Umeå, the Podium Ceremony and Prize Giving will take place at Arena Red Barn.

A warm welcome to a magic winter rally week in Sweden!

Rally Sweden

Organising Team

Covid-19

We are in the middle of a global pandemic, and there are bound to be restrictions and challenges to consider moving forward, even if vaccination programmes worldwide are ongoing.

Along with the involved local, regional and national authorities, we're aiming to draw up an action plan that will make sure we can run a safe event as normal as possible – with special adaptations for the COVID-19 situation.

We will of course be monitoring developments with the pandemic, both at home and abroad, and adapting to the latest restrictions and regulations.

We will publish further information on www.rallysweden.com.

THIS DOCUMENT HAS NO REGULATORY POWER - FOR INFORMATION ONLY!



CLOSER TO RALLY.

CONTACT DETAILS

ADDRESS AND TELEPHONE

Permanent contact details

Rally Sweden AB
Visiting and delivery address: Lantvärnsgatan 4,
SE-652 21 Karlstad
Telephone: +46 (0) 54 10 20 25

E-mail: historic@rallysweden.com
Web: www.rallysweden.com

Rally HQ contact details

Visiting and delivery address: Nolia, Signalvägen 3, SE. 903 22 Umeå Sweden
GPS -coordinaters: N63° 50.017` E20° 14.417`

The documents on the Official Notice Board will be published on the website
<http://rallysweden.com/en/competitors/noticeboard-historic/>

ORGANISATION

General Manager	Glenn Olsson	
Clerk of the Course	Hasse Joansson	+ (0)70-316 20 32
	historic@rallysweden.com	
Secretary of the Rally	Ann-Louise Pettersson	+ (0)70-555 85 01
	ann@rallysweden.com	
Chief Scrutineer	Staffan Rönmark	+ (0)70 320 38 39
Chairman of the Stewards	Kenneth Ax	+ (0)70-365 49 83
Steward	Thure Karlsson	+ (0)219 63 69
Technical Controller	Christer Ekevad	+ (0)70-346 66 83
Environmental Coordinator	Michael Jalmby	+ (0)70-639 72 39
Chief Route Officer	Johan Magnusson	+ (0)70-549 44 88
Chief Safety Officer	Bertil Klarin	+ (0)70-594 54 95
Service Park Coordinator	Björn Johansson	+ (0)70-694 11 36
Road Book	Krister Berglund	+ (0)70 511 43 76
National Press Officer	Patrick Johansson	
Pace notes	Patrik Barth	
Resultchief	Kicki Axelsson	
Doctor	Thorsten Egonsson	



CLOSER TO RALLY.

SCHEDULE

Schedule before the rally week

Monday 24 th January 2022	
Closing date for entries kl.15,00	Website
Friday 28 th January 2022	
Publication of entry list Confirmation of entry and entry list in seeded order will be sent to the entrants by e-mail and published on www.rallysweden.com	Website
Wednesday 9 th February 2022	
Last day for the Entry fee to be paid Last day to order and pay for electricity and extra material	Website
Schedule during rally week	

Wednesday 23 th February 2022		
16.00-20.00	Collecting of material	Rally HQ
14.00-20.00	Service Park open. Administrativ check and collection of material must be made, before entry to service park .	SP Nolia
Thursday 24 th February 2022		
06.00-08.00	Collecting of material	Rally HQ
14.00-20.00	Service Park Open Administrativ check and collection of material must be made, before entry to service park .	SP, Nolia
TBA	Collecting tracking equipment with SAS truck/bus Times will be given in the collected material.	SP, Umeå
17.00-20.00	A-Scrutineering. Valid HTP including FIA homologation document shall be presented. NO DRAFT.	Opus Bilprovning Västerslätt, Umeå
21.00	Publication of start list day 1	Web



CLOSER TO RALLY.

Friday 25 th february 2022		
10.15	First car starts day 1	SP, Umeå
14.39	First car in Service, End of day	SP, Umeå
21.00	Publication of start list day 2	Website
Saturday 26 th february 2022		
09.30	First car starts day 2	SP, Umeå
15.30	First car Finish.	Red Barn
14.00	Podium cermoni with Prizegiving according to Provisional final classification Final scrutineering at the finish.	Arena After SS 11
TBA	Publication of Provisional final classification	Webb
TBA	Publication of Final classification (in case of no protest)	Webb

ADMINISTRATIVE CHECK

Due to Covid-19 pandemic the administrative check will be done digital. People from outside Sweden must send in copies of license, permission from ASN to start, copy of driving license, copy of HTP paper for car.

Rally HQ Nolia Umeå

GPS Koordinator: N63° 50.017' E20° 14.417'

Onsdag 23 Februari 16.00-20.00

Torsdag 24 Februari 06.00-08.00

Licens

The Competitor shall send a copy of competing license, entry license (if that has been used) and driving license driver and co-driver.

Send to historic@rallysweden.com

Entry package

The following is included in the entry fee;

Service Park area approx.	6 x 10 m
Service plate marked Historic (must be mounted for entrance in to service park)	2
Recce numbers	1 set
Rally plates and starting numbers for the competing car	1 set
Supplementary Regulations/Information 1-2/Bulletins/Result	www.rallysweden.com
Road Book	1
Route map	2
Official Magazine/Programme	2
Teampass	6



CLOSER TO RALLY.

Reconnaissance

Recce Schedule and stages

TBA schedule will be included in the materials to collect

SERVICE PARK

Service park is located and established at Nolia Congress center in Umeå

GPS coordinator: N63° 50.017' E20° 14.417'

The material must be collected, and stickers put up in front Window before entering the service park.

On the Service park is an opportunity to buy electricity See form back in this document.

Is's not allowed to use fossil powered power supplies or heaters on the Service Park, due to the ground is on Bandy ice and can destroy the ice under.

Ordering of electricity must be done at latest at 9/2 send your order to :

adam@rallysweden.com

230v 16A 2200 sek+ 25%VAT= 2 750 SEK

400v 16A 3 600 SEK + VAT 25%= 4 500 SEK

The organiser has arranged a security company, FFO, for the over-view control at the Service Park during the night of the Rally.

RESTRICTIONS ON THE SERVICE PARK

It is forbidden under any circumstances to drill holes in the ground at the Service Park. Teams and competitors are asked to bring weights for tents and others that need to be fastened.

Teams and competitors are responsible for the occurrence of no leakage of fuel or other liquids on the ground.

Inspection will be performed during the weekend.

Smoking is forbidden in front of the overnight parc ferme.

If competitor will use larger buses/trucks they have to contact:

Björn Johansson tel. 070-69 41 136 mail: bjorn.johansson@hotmail.se

Your contact at the service park during the Rally will be

Service Park Coordinator: Björn Johansson tel. +(0)70-69 41 136

Parc Fermé Umeå

Parc Fermé Umeå is at Dragonens Parkeringhouse (see service par map). There is a possibility to use the Parking house for parkingin night between Thursday and Friday,

Parking for trailer at the Service Park

The parking for the trailers see drawing in the end of this document.



CLOSER TO RALLY.

MEDICALCARE

A medical centre will be established at the Service Park, see service park drawing.

Opening hours:

Thursday	24 februari	08:00-15:00
Friday	25 februari	07:00-22:00
Saturday	26 februari	07:00-22:00

TRACKING/ Safety Emergency Console

Installation of the FIA Safety Emergency Console boxes. The system must be installed before the car is brought to scrutineering.

For Installation instructions see web page at the Notice board

Systems may be collected either by the crew or a representative.

A €1200 fully refundable credit card deposit will be collected by STATUS AWARENESS SYSTEM (SAS) from each competitor for the FIA Safety Emergency Console boxes. This will be done with a swipe machine and at the end of the rally the slip will be destroyed when competitors return the equipment in good condition. Deposit must be done by credit card, no other deposit accepted.

The FIA Safety Emergency Console System devices must be removed in the Final Parc Fermé.

You can collect the system on Thursday 24 february xx.xx-xx.xx at STATUS AWARENESS SYSTEM (SAS) at the Service Park

They must be returned no later than xx.xx hrs Saturday 16 february to STATUS AWARENESS SYSTEM (SAS) at the Service Park

The times to collect the GPS will be in your collected material.

SCRUTINEERING

Scrutineering is at Opus Bilbesiktning, Västerslätt, Umeå

GPS-Koordinater: N63 51.278'E20 12.533

Road book to the scrutineering can be found at in the collected material

Note! Rally studded tyres are forbidden in the workshop at Opus

Because the scrutineering will clash with the recce someone other than the driver is allowed to take the car to scrutineering.

Don't forget to take the driver and co-drivers personal equipment to scrutineering.

Times

Thursday 24 February at 17.00-20.00

Startnumber 201-210 kl. 17.00-kl.18.00

Startnumber 211- 220 kl. 18.00-kl. 19.00

Startnumber 221-224 kl.19.00-kl.20.00

The tracking equipment must be mounted before the scrutineering.



CLOSER TO RALLY.

DURING RALLY

RESPIT AND MAX TIMES

According to Swedish ASN regulation: 15 minutes max between two after each other following TC:s, max 30 minutes per day or max 60 minutes for the whole Rally.

PRIZES, POINTS, TIE, PRIZE GIVING

Prizes

Prizes will be awarded top three overall

Prizes will be awarded top three in each class.

Tie

In case of a tie the stage time on SS1, SS2 etc will determine.

Prize giving

Prize giving for the Overall winner, 2nd and 3rd and for each Class will be on the Podium at the Red Barn Arena just after finish after last stage. After finish last stage cars will be hold in a holding area waiting for the winner.

TWO-WAY RADIO

Sweden

Permission for the use of radio transmitter must be applied for at the Swedish authority in charge:

Post & Telestyrelsen,

Phone: +46 (0)8 678 55 00

e-mail: pts@pts.se, web site: www.pts.se



CLOSER TO RALLY.

IMPORT OF VEHICLES AND SPARE PARTS

From the European Union.

Competitors from the European Union do not need to make any special custom clearance for temporary import of cars and equipment on arrival in Sweden.

From outside the European Union

If you are importing the rally car, service vans and/or spare parts/equipment from outside the European Union you have to report to the customs on arrival in Sweden. Please contact the Custom authorities in Sweden in advance, phone +46 (0)771 520 520, website: www.tullverket.se, for current information and procedure.

IMPORTANT - REGULATIONS IN SWEDEN

DRIVING IN SWEDEN

Sweden

All vehicles must be equipped with winter tyres. For current and specific information see: <http://www.transportstyrelsen.se/en/road/Vehicles/winter-tyres/>

HOTEL AND ACCOMMODATION RESERVATION

The availability of rooms cannot be guaranteed. Please contact our booking department for making the reservation:

Phone: +46 (0) 54-10 20 25

E-mail: booking@rallysweden.com

COMPETITORS RELATIONS OFFICER

Leif Sjöström +46(0)70- 614 11 42

Leif will be using a red jacket with the Rally Sweden logo at front, left side, and back and WRClogo at front, right.

Schedule for Competitors relation officer will be in your material.



HOSPITALITY ARRANGEMENTS

Excellent hospitality packages at selected special stages within the rally area are available

For more information and booking, please contact:

Phone: +46 54 10 20 25

E-mail: patrick@rallysweden.com vip@rallysweden.com

MEDIA

Contact details before the rally

National Press Officer

media@rallysweden.com

Phone: +(0)72-200 35 59

Press center is at the service Park see drawing.

MEDICAL AND SAFETY SERVICE

Medical information for Sweden and Norway

Citizens from the EU/EEA - countries will receive emergency medical care paying the same patient charge as Swedish citizens. Competitors from these countries must provide an E 111 form, EU card or corresponding document verifying that the person is covered by health insurance, when medical care is required, and should obtain this form before leaving their homecountry. Citizens from the Nordic countries are not required to provide the E 111 form.

Besides the EU/EEA-countries Sweden has an agreement with the following countries which guarantees the citizens emergency medical care at the same patient charge as Swedish citizens: Algeria and Australia. Competitors from these countries must also provide an E 111 form, EU card or corresponding document verifying that the person is covered by health insurance. Citizens in other countries than mentioned above have to pay the total cost of treatment plus the patient charge.



CLOSER TO RALLY.

SWEDEN

Emergency number: 112

To ambulance, Fire Brigade or Police:

Your call is free from any telephone

Medical Care

In urgent cases call **112**

In non-urgent cases, contact the 24 hour telephone service for medical care assistance: **1177**

Your phone call will be answered by experienced nurses, who will help you to find the best treatment or book a doctor appointment.

Hospitals in the area

Phone (switchboard)

Umeå	090 785 00 00	open 06–22
Skellefteå	0910 77 10 00	open 24
Lycksele	0950 390 00	open mon-fri 08–20

Police

Police station Umeå	114 14
---------------------	--------

Towing Service Sweden

Viking Sverige AB	+(0)20 100 100
Falck bilbärgning Umeå	+(0)90 14 60 20
UmeAssistance	+(0)90 14 16 90

Pharmacies Phone: +46 (0)771 450 450 (national telephone service)

Umeå	Apoteket Utopia	Kungsgatan 65a
	Apoteket MVG	Kungsgatan 52-54
	Apoteket NUS	Norrlands
	öppenvården	Universitetssjukhus
	Apoteket Avion	Marknadsgatan 11
	Kronans Apotek	Renmarkstorget 9



CLOSER TO RALLY.

Usefull services

Rental Cars

Europcar	www.europcar.com	Phone: +46 (0)90 15 39 60
Eurocar	www.europcar.se	Phone: +46 (0)90 15 39 60
Hertz	www.hertz.se	Phone: +46 (0)90 17 71 40
Mabi	www.mabi.se	Phone: +46 (0)90 13 38 00
Sixt	www.sixt.se	Phone: +46 (0)90 12 45 04

Security company

Securitas ake.backstrom@securitas.se Phone: +46 (0)10 470 29 18

IMPORTANT DOCUMENTS

MAPS AND DRAVINGS

You will find this at:

<http://rallysweden.com/en/competitors/noticeboard-historic/>

Time Schedule

You will find this at:

<http://rallysweden.com/en/competitors/noticeboard-historic/>

CLOSER TO RALLY.

Produkt	Pris/st	Antal	Pris totalt
Road Book	750 SEK		
Map	50 SEK		
Teampass	750SEK		
Festival pass	750 SEK		
Rally Magazin	100 SEK		

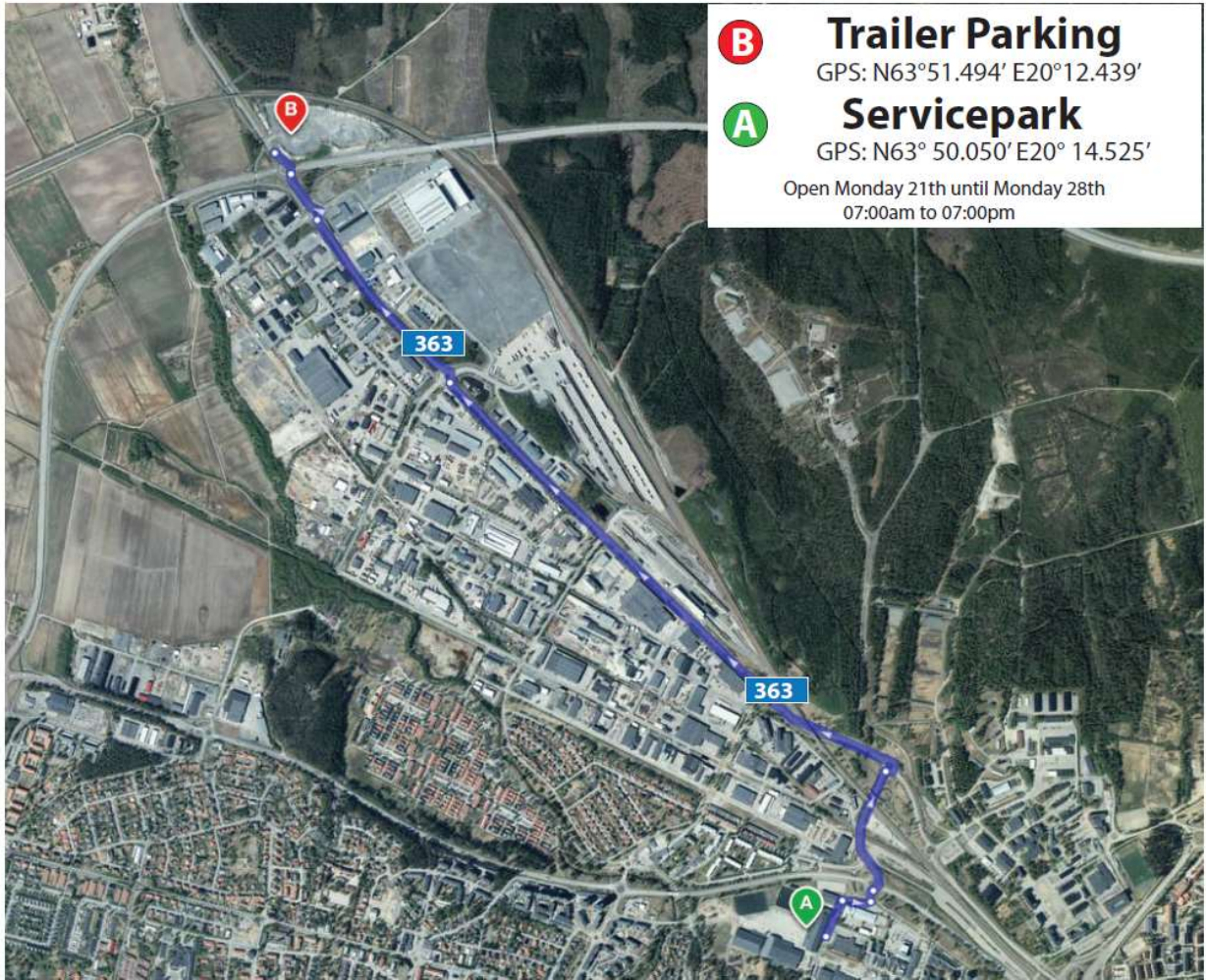
Ordering extra material send the order to Historic@rallysweden.com

Vid betalning ange startnr. betalas till Rallyts BG **5070-5169 Senast 9/2**

För att köpa fast ström skicka beställning till adam@rallysweden.com **Senast 9/2**

Betalning görs till Rallyts BG **5070-5169** ange startnr vid betalning **Senast 9/2**

Ström	Pris ex moms	Pris ink moms
230v 16A	2 200	2 750
400 v 16A	3 600	4 500



GPS: N63° 50.050' E20° 14.525'



Startnr.	Förare/Kartläsare	Nat/Klubb	Nat/Klubb	Bi/modell	Klass	Anmälare
201	Nils Bergquist/Karl-Erik Magnusson	SWE/Västerås MS	SWE/Västerås MS	Volvo Amazon	5	Carfix Rally Team
202	Martin Lindén/Mattias Lago	SWE/Team Skogsåarna	SWE/Team Skogsåarna	Volvo PV 544 Sport	5	
203	Ted Malm/Katharina Malm	SWE/Arlövs MC	SWE/Arlövs MC	Volvo PV 544	5	Lundells Motorsport
204	Kenth Bååth/Denso Melwinsson	SWE/SMK Vingåker	SWE/SMK Trollhättan	Volvo 164E	8	Denso Rallysport Sweden
205	Johnny Sundström/Anton Sundström	SWE/Vara MK	SWE/Vara MK	Opel Ascona A	8	
206	Curt Jonsson/Lars-Erik Henriksson	SWE/Tväråns IF	SWE/Luleå MS	Volvo 142	8	Norrbottens Bildemontering AB
207	Ulf Zetterström/Lars-Gunnar Karlsson	SWE/Vallentuna MK	SWE/Vallentuna MK	Ford Escort RS 2000	8	
208	Anton Mattsson/Erika Eriksson	SWE/Umeå AK	SWE/Umeå AK	Volvo 242	9	
209	Jonas Wallén/Mats Jägerhult	SWE/Vallentuna MK	SWE/Vallentuna MK	Volvo 244	9	
210	Mathias Engh/Andreas Wilhelmsson	SWE/Grangårde RRC	SWE/Fredriksbergs MK	Toyota Starlet	9	
211	Stig Roar Holter/Alina Drazkowski	NOR	NOR	Volvo 240	9	
212	Peter Engström/Jonny Olofsson	SWE/NMS Boden	SWE/Umeå AK	Ford Escort RS 1800	9	
213	Lars Wikman/Lennart Hasselgren	SWE/Sandvikens MK	SWE/Sandvikens MK	Ford Escort	9	WRT Motorsport
214	Christer Hedlund/Ida Lidebjör Granberg	SWE/Lycksele MK	SWE/Asarums MS	Ford Escort RS 1800	9	
215	Pelle Palmqvist/Mikael Kjellgren	SWE/SMK Gävle	SWE/Hjo MK	Ford Escort RS	9	
216	Kjell Fransson/Peter Fransson	SWE/Vimmerby MS	SWE/Vimmerby MS	Renault A 310	9	
217	Arne Rådström/Thomas Nilsson	SWE/MK Ratten	SWE/NMS Boden	Volvo 262	9	
218	Ricardo Hillesjö/Petri Vääänen	SWE/Haninge MK	SWE/Haninge MK	Suzuki Swift GTI	10	
219	Seppo Raittila/Janne Karhunen	FIN	FIN	Toyota Corolla GT	10	PR-Racing
220	Lasse Storm/Ulf Storm	SWE/Stenungsunds MS	SWE/Stenungsunds MS	Peugeot 205 GTI	10	
221	Anders Nystedt/Björn Wulff	SWE/Vallentuna MK	SWE/Vallentuna MK	Opel Kadett Gsi 16v	10	
222	Anders Söderberg/Lotta Strand	SWE/Botkyrka MK	SWE/SMK Valdemarsvik	Opel Kadett Gsi	10	
223	Arne Bäckström/Björn Wessel	SWE/Haninge MK	SWE/Carlstad RC	Opel Kadett Gsi	10	
224	Nils Östgård/Fredrik Andren	SWE/Vännäs MK	SWE/Umeå MK	Opel Kadett Gsi 16v	10	

SAS Fitting Kit Manual – RALLY CAR

****Product Disclaimer****

"This manual, the specifications, and the material contained in it, as released by Status Awareness Systems and RallySafe, is for the purpose of information only. Due to continuous ongoing development, information and specifications may change at any time without notice. RallySafe, and the companies that have contributed to it, shall not be liable for any use of the manual or information supplied.

The material contained in this manual is protected by copyright and other types of Intellectual Property Rights. The commercial exploitation of the material contained in this specification requires a license to such Intellectual Property Rights.

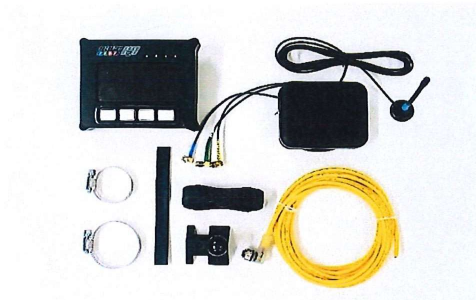
This manual may be utilised or reproduced without any modification, in any form or by any means, for informational purposes only. For any other purpose, no part of the specification may be utilised or reproduced, in any form or by any means, without permission in writing from RallySafe.

The word RallySafe and the RallySafe logo are registered trademarks"

Fitting Kit Components

The RallySafe Kit includes:

- RallySafe Installation and Fitting Kit Instruction Sheet;
- 3-in-1 antenna with leads;
- Internal radio antenna with lead;
- 6 – 24v wiring loom with plug;
- Mount, to be bolted to tunnel;
- Adjustable mount connector/knuckle.



(Contents may differ slightly to image shown)

Car Tracker Fitting Kit Manual

12 Volt Power Supply (Please read carefully)

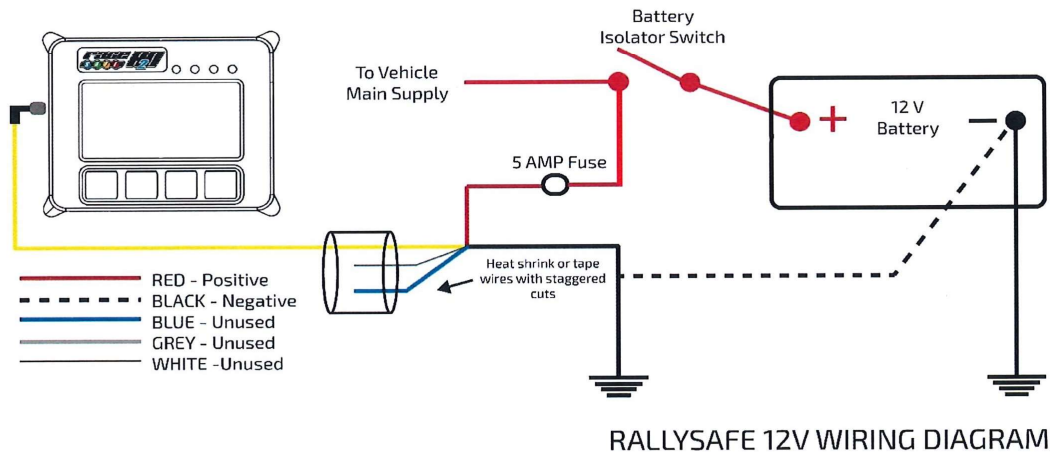
RallySafe requires a reliable power supply from 9 to 28 volts DC. We recommend a 5 amp (Max) blade type or similar quality fuse is used at the battery supply end of the RallySafe power lead.

Zero volts or battery negative can be picked up at any suitable earthing point providing the isolation switch does not switch the negative side of the battery.

The RallySafe unit has an internal battery that is kept charged via the car's power supply. It acts as a reserve supply to power the unit in the case of an accident where a car's power supply is interrupted. i.e. car battery smashed or dislodged.

In the yellow power loom there are 5 wires. **White blue and grey must be stagger cut and heat shrinked or taped back so they can't short to ground or to each other.** Red and black are used as follows:

Connection Diagram



Unit Mounting & Dimensions

For mounting the RallySafe unit is a RAM style 50mm x 75mm flat base with ball, bolted through the tunnel with 4 M6 Bolts. It should be in a central, protected location on the central tunnel in front of the seats and both easily visible and accessible by both the driver and co-driver/nav. Photographs of mounting and positioning can be seen below.

MOUNTING EXAMPLES

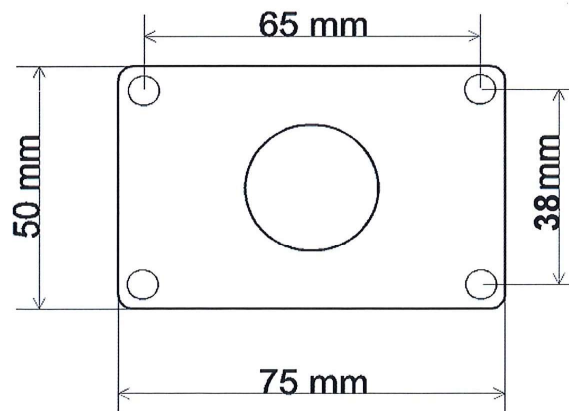


Here the 25mm rubber ball mount is securely attached to the tunnel.



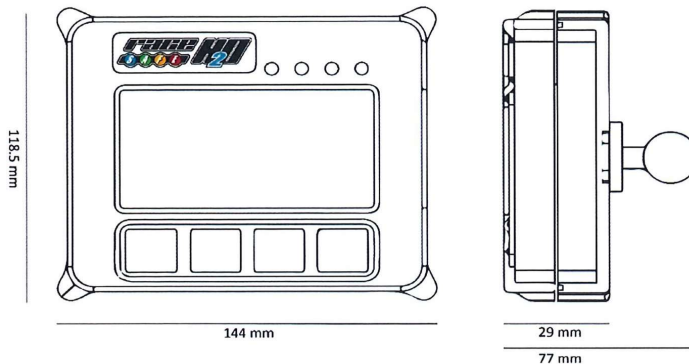
The RallySafe unit then mounts to the 25mm rubber ball mount (connected through the RallySafe connector).

Base Dimensions:



Car Tracker Fitting Kit Manual

Unit Dimensions



Antenna Installation

All leads on both external and internal antennas **must** run on the inside of all roll cage bars. This is to stop cable crushing on impact. The preferred route is to go down from the antenna, underneath the closest part of the roll cage (roof cross or main hoop), follow that along to the roof hoop, then go down the inside A pillar to the unit. Any excess cable must be run so that the cable is not bent any tighter than a 100mm radius. We recommend running it across the underside of the dash and back (do not coil in tight loops). Cables must be tied neatly along the whole installation all the way to the unit so they can't be accidentally caught or dislodged. All this will be checked at scrutineering and you may be required to fix it before your car can pass.

External Antenna:

The antenna is mounted through a 12mm hole in a central location on the ROOF of the vehicle, rear of the main roll bar hoop, allowing the cabling to pass through the roof and follow the cage bars back to the RallySafe unit location. The antenna is a fully watertight unit which seals against the roof surface.



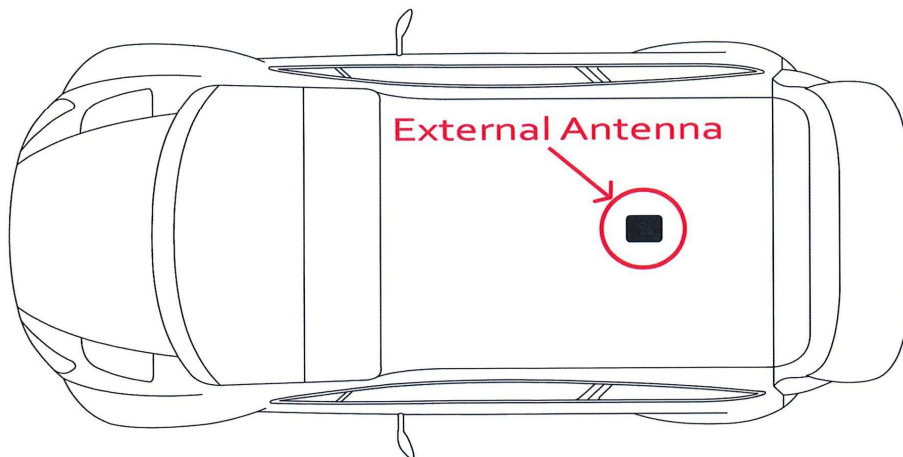
Car Tracker Fitting Kit Manual

Stick-on Antenna (Alternative):

The antenna is mounted on the **ROOF** of the vehicle, preferably within easy cable reach of the final RS unit mounting position allowing the cabling to then pass through the door seal and follow the cage bars back to the RS unit location. The antenna is a fully watertight unit which seals against the roof surface. Cabling will need to be suitably taped and protected to the outside of the car.

Utvändig antenn med magnetfäste

Antennen monteras på taket, förslagsvis så att det blir en enkel kabeldragning till RS enhetens slutliga montering. Kablarna skall passera genom dörrtätningen och sedan följa rören på skyddsburen tillbaka till RS enheten. Antennen är fullständigt vattentät samt sluter tätt intill taket. Kablarna måste tejpas samt skyddas på utsidan bilen.



Car Tracker Fitting Kit Manual



CLOSER TO RALLY.



Page | 7

Utvändig antenn

Antennen kopplas enligt följande (Det kan före komma variationer med olika antal kablar samt olika typer av kabel)

1. De 2 UHF kablar har färgkod **BLÅ**, kopplas på RallySafe enheten mot kontakt märkt "UHF" på RallySafe enheten (höger kabel). Kontakten är på baksidan av enheten och är **BLÅ** markerade.
2. Satellit kommunikationsantenn kabeln är kopplad till mitten eller på baksidan av terminalen märkt med "IRI" (Vänstra kabel). Den kan också var **GUL** markerad (om det är en 2-in-1 antenn finns möjligheten att det kanske inte är märkt).
3. GPS antennkabel är märkt "GPS", kopplas till RallySafe enheten med kontakt märkt "GPS" (höger kabel). Kontakterna kan vara på sidan eller baksidan av enheten och kan vara märkta med **GRÖNT**.
4. GSM, har en small/tunn antenn som medföljer RallySafe enheten, och är kopplad till sändarterminalen genom en kontakt som är märkt med "GSM" på RallySafe enhetens (Vänstra kabel). Kontakterna finns på baksidan av enheten och är ev. märkta med **RÖTT**.

Det är "smarta" kablar som lyser rött om det är felkopplat och grönt om det är rätt kopplat.

Antenna leads are connected as follows (There may be variations with the type and number of leads).

1. The 2 UHF leads, colour-coded **Blue**, is connected to the terminal labelled "UHF" on the RallySafe unit (Right Hand Thread). Terminals are located of the rear of the unit and/or colour-coded Blue.
2. The Satellite Communication antenna lead is connected to the centre or rear terminal labelled "IRI" (Left Hand Thread). It may also be colour-coded **Yellow** (this may be not marked on the 2-in-1 antenna).
3. The GPS antenna lead labelled "GPS", is connected to the terminal labelled "GPS" on the RallySafe unit (Right Hand Thread). Terminals may be on the side or rear of the unit and/or colour-coded **Green**.
4. GSM, has a small stick antenna supplied with the RallySafe unit, and is connected to corresponding terminal labelled "GSM" on the RallySafe unit (Left Hand Thread). The terminal is located on the rear of the unit and/or colour-coded **Red**.

"Smart" cables will show red light if wrong and green if right connected.

Internal Antenna:

The Internal Antenna should be placed on the inside of the **ROOF** in a clear uncluttered area, with a 200mm radius clear of any bar work or solid metal object. The internal antenna has a magnetic base with double-sided tape for adhesion. The cable is then run to the RallySafe unit. **Please keep cable on the inner side of the roll cage pipework so as not to be crushed in the event of an accident.**

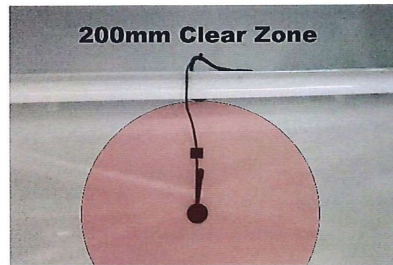
Invändig Antenn:

Den invändiga antennen skall placeras på insidan taket på ett fritt område med en radie på 200mm till annat fast eller löst föremål av metall (t.ex. båg konstruktion). Den inre antennen har en bas som är magnetisk men har i tillägg också dubbelsidig tejp. Kablarna dras till RallySafe enheten. **Se till att kablarna är placerade på insidan av skyddsbågen så de inte blir skadade (kommer i kläm) vid en ev. olycka.**



Antennen är monterad i centrum av taket, vilket är att föredra.

Here the antenna is stuck to the inside centre of the roof (Preferred)



Observera att den inre antennen måste ha ett fritt område på 200 mm till skyddsburen och andra metall föremål.

Please note the internal antenna must be 200mm AWAY from any roll cage components

Contact Us

STATUS AWARENESS SYSTEMS

14 Short St, Ulverstone
Tasmania, 7315
AUSTRALIA
Phone: +61 3 6425 7003
Email: contact@rallysafe.com.au

Car Tracker Fitting Kit Manual

